



SUSTAINABLE SOLUTIONS AND NEWS FOR PRODUCERS OF INDEXABLE INSERTS

Dear customers - producers of indexable inserts,

We would like to introduce you options for increasing the sustainability of your production processes by decreasing the amount of waste material with regards to usage of diamond grinding wheels.

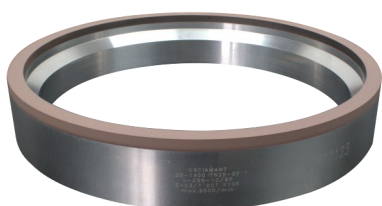
- The solution lays in renovation of used diamond grinding cup wheels by putting a new grinding layer on the original aluminum or steel core body.
- We successfully renovate grinding layers in resinous, hybrid as well as vitrified bond.
- We standardly renovate cup wheels of FEPA types 6A2, 11A2, or other up to diameter 500 mm and layer width of 10 mm.
- Such renovated wheels are used in the most frequent grinding machines for inserts production, e.g. Agathon, Wendt, Waida.
- Wheels can be renovated up to 5-times, depending on the wheel's dimensions and application.
- We can save between 5 to 20% of the new wheel's price depending on the dimensions and type of a grinding wheel.

CORE BODIES OF WORN OUT WHEELS
FOR INDEXABLE INSERTS



Cost savings and improved sustainability can also stem from increased efficiency of your grinding processes. With this goal in mind, we have developed new bonds across our product portfolio. The target was to increase wheel's lifetime, edge retention and decrease grinding pressure:

E-C3: RESINOUS BOND



30% lower wheel wear per 1 insert compared to standard bonds

V-M: VITRIFIED BOND



Excellent edge quality of a PCD/PCBN insert as well as longer wheel lifetime

FS-E: HYBRID BOND



For very productive grinding with target of insert's high surface quality

Manufacture of wheels for indexable inserts is one of the key focus areas of our product development in Urdiamant. Throughout close cooperation with our customers, we have developed a full-range product portfolio that satisfies all major applications of today's world of production of indexable inserts.



OUR PORTFOLIO OF GRINDING WHEELS FOR MANUFACTURE OF INDEXABLE INSERTS

MACHINED MATERIAL	GRINDING MACHINE	BOND TYPE	PRODUCT LINE	NOTE
TUNGSTEN CARBIDE	Wendt WAC: 725 & 715 / Quattro / Centro / Scalar	Resinous	<i>Různá pryskyřičná pojiva</i>	Wheels ø250 - 400 mm
	Agathon: LeoPeri / Dom / Combi / Penta			
	Waida			
	Wendt WAM			
	Wendt WBM (ECO)	Hybrid	® <i>Insert-Speed</i>	Wheels ø350 and ø500 mm
	Agathon Combi / Penta			
	Wendt WAC			
	Agathon LeoPeri / Dom			
	Wendt WAM			
Agathon Combi, Penta with TM PowerGrind	® <i>Insert-Speed PG</i>	Wheels ø400 mm; For machines with continuous dressing with electro-erosion		
CERAMICS	Wendt WAC	Intermetal	<i>BZ</i>	Used with grit D28/20 and D20/14 µm (standardly marked as D20 and D15)
		Vitrified	<i>V</i>	
PCBN	Agathon, Wendt, Waida, EWAG Ewamatic	Resinous	<i>Různá pryskyřičná pojiva</i>	
		Vitrified	<i>V</i>	
	Agathon Combi, Penta with TM PowerGrind	Hybrid	® <i>Insert-Speed PG</i>	Wheels ø400 mm; For machines with continuous dressing with electro-erosion
PCD	Agathon, Wendt, Waida, EWAG Ewamatic	Vitrified	<i>V</i>	High-powered CNC grinding machines for grinding with vitrified wheels (4-5 axis machines)



CONTACT US FOR MORE INFORMATION

E-mail: urdiamant@urdiamant.com
Landline: +420 583 366 472
Web: www.urdiamant.cz
Address: Dolnostudénská 715/3, 787 01 Šumperk, Czech Republic